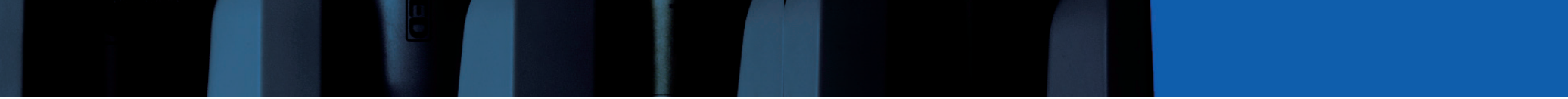




MOBILE DENTISTRY






# VIVA ace



## Wherever Possible

### For more comfortable & more advanced home visits for dental treatment

As societies age more rapidly, there is an ever greater need for mobile dental treatment. Today's ageing population keeps more of their natural teeth, which means a wider range of treatments is required nearer to the patient. VIVA ace combines the functionality of a dental treatment centre in a compact body with multipurpose micromotor, ultrasonic scaler and more. Its lightweight build means it is easy to carry and straight forward to set up in different locations. The first of its kind with high-functionality, supports more comfortable dental treatment wherever the patient.

-  **Lightweight and Compact Body**
-  **High Functionality, Just Like a Treatment Centre**
-  **Straight Forward Set-up and Breakdown**



### Lightweight and Compact Body

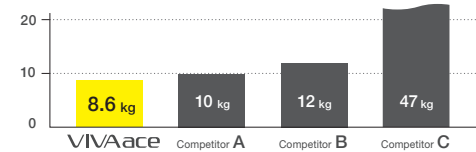
Highly manoeuvrable and lightweight, weighing only 8.6 kg. Its compact size is ideal for stowing in a car, is easily carried up and down stairs and fits into compact spaces. Simple to transport from one patient to another.

The small size has been achieved by making each component lightweight and compact without compromising functionality.

### All-in-one Package

A micromotor, ultrasonic scaler, 3 in 1 syringe and suction combined in a single compact body including storage space for all instruments.

### Lightweight at 8.6 kg,\* it can be Taken Anywhere.



\*Weight without handpieces





### Highly Functional Portable Dental System Just Like a Treatment Centre

Excellent efficiency and safety are achieved via both the intuitive and highly visible large LCD control panel and the superb functionality provided by each individual instrument. A high functionality system just like a treatment centre.

## Advanced Functionality in a Compact Body



Suction

Ultrasonic scaler

Micromotor

3 in 1 syringe

Suction waste collection tank

Fresh water tank

Intuitive easy to read control panel

Foot controls

Photos are of optional extras.

### High Functionality Micromotor

Full endodontic functionality



NLXplus

Ideally suited for all requirements of state of the art dentistry

	Rotation speed (min <sup>-1</sup> )	Torque (Ncm)
General mode	1,000~40,000	4.0
Endodontic mode	100~5,000	0.3~3.0

3 in 1 syringe



Lightweight and simple operating 3 in 1 syringe. The syringe nozzle uses a simple quick release mechanism.

Light Probe (optional)



isoE-LUX

### Multipurpose Ultrasonic Scaler

Comprehensive tip range



Varios2 Lux

NSK iPiezo ultrasonic engine

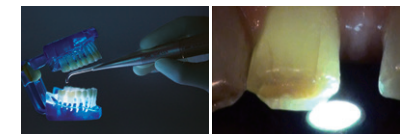
Provides the appropriate power at the tip end adapting to tooth conditions for firm or soft tartar. Safe scaling is possible even when removing hard tartar.

Suction



Built in ball lever valve to adjust suction power.

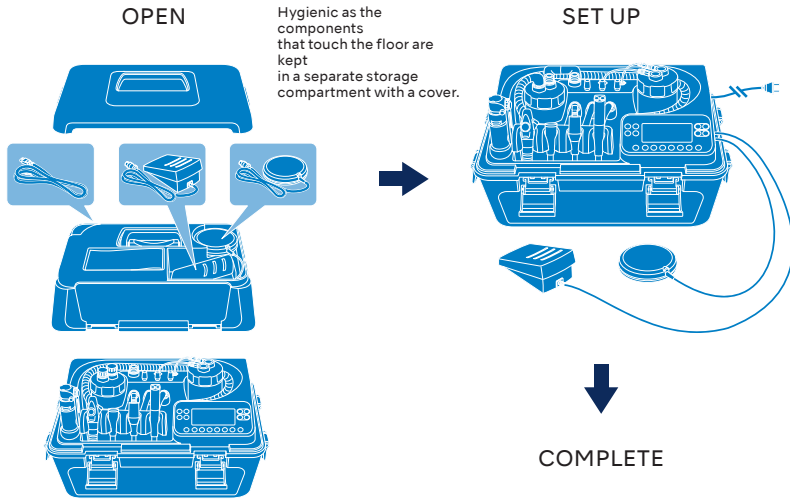
Bright illumination of the oral cavity in any treatment environment. Good accessibility with a slim body that also makes it possible to access hard-to-see areas.





### Quick Set up and Storage

Set up and storage is straight forward, simple and quick, making work more efficient and easier. The instrument holders and arm can be set at 4 different levels.



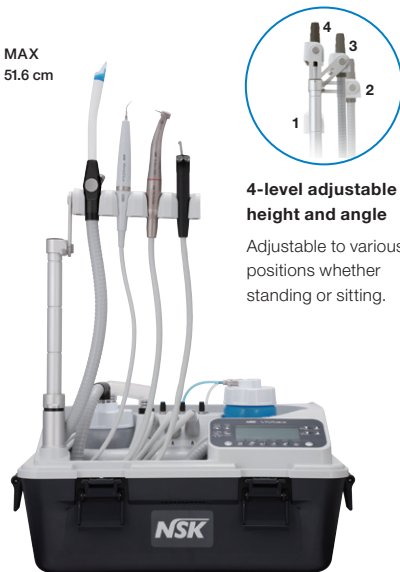
#### Storage is simple

Remove the handpieces for easy storage.



Very easy to maintain

MAX  
51.6 cm



# VIVA ace



MODEL	ORDER CODE
<b>VIVA ace 230 Complete Set</b>	<b>Y1003773</b>

#### Contents

- VIVA ace 230 Basic Set
- VIVA ace Motor Kit
- VIVA ace Scaler Kit

#### Specifications (Control unit)

- Dimensions : W 462 x D 298 x H 284 mm
- Unit weight : 8.6 kg
- Power Supply : AC 100-240 V 50/60 Hz
- Power source input : 130 VA



MODEL	ORDER CODE
<b>VIVA ace 230 Basic Set</b>	<b>Y1003774</b>

#### Contents

- Control unit
- AC Power Cord
- Foot Control (FC-76S)
- Foot Control (FC-70S)
- Top Case
- V-ace Vacuum Hose Set
- V-ace Vacuum Bottle Set
- V-ace Vacuum Nozzle (10)
- V-ace Water Bottle Set
- V-ace 3 way Syringe Set
- Shoulder Belt



MODEL	ORDER CODE
<b>VIVA ace Motor Kit</b>	<b>E1040002</b>

#### Contents

- Motor NLX plus
- Motor Cord
- Motor Cap
- Protection Plug



MODEL	ORDER CODE
<b>VIVA ace Scaler Kit</b>	<b>E351006</b>

#### Contents

- VA2-LUX Handpiece
- Scaler Cord
- Tip (G6, G8)
- Tip Wrench
- Tip Holder

# VIVAMATE G5



**Portable LED Micromotor;  
From Denture Adjustment to General Applications**

## Internal Spray LED Micromotor



The compact size micromotor has been specifically developed for mobile dentistry and weighs only 148 g (w/cord) and features internal spray and LED light. Although fully portable it performs like an in-surgery system meeting a wide range of clinical requirements and is compatible with your existing contra-angles and straight handpieces<sup>1</sup> helping you to manage the cost of a mobile dentistry set-up.

<sup>1</sup> Conformable to ISO 3964.



## Able to Use Both Rechargeable Battery and AC Adaptor for The Compact Control Unit

Able to operate with rechargeable batteries anywhere. When battery power level is low, just plug in AC adaptor into outlet; bring the unit to patient visits without worry. It is very easy to carry since the control unit is palm-size (W 72 x D 180 x H 36 mm) and weighs only 370 g.

## Foot Control (Optional)

Conveniently adjust the motor speed by depressing the pedal of the foot control without taking your eyes of the treatment.



## Carrying Case

Comes with a carrying case designed for storing VIVAMATE G5 unit and its attachments.



## VIVAMATE G5 Complete Set

MODEL	ORDER CODE
VIVAMATE G5 230V	Y1002801

### Contents

- Control unit
- Handpiece Stand
- Motor (Including Motor Cord)
- AC Adaptor
- AC Power Cord
- Carrying Case

### Specifications

[Control Unit]

- Dimensions : W 72 x D 180 x H 36 mm
- Weight : 370 g Charge/Continuous use : 2 h / 1 h (depending on workload)

[Micromotor]

- Dimensions : ø22 x L 68.6 mm
- Weight : 148 g (Include Motor cord)
- Speed: 3,000-30,000 min<sup>-1</sup>
- Torque: 3 Ncm (30,000 min<sup>-1</sup> while rotating)



# VIVAsupport 2



## SYNC MODE Synchronization with the irrigation function

When VIVAsupport 2 is combined with VIVAMATE G5, which is equipped with an internal spray LED micromotor, and Varios 370, compact ultrasonic scaler, user can operate (turn on / off) the irrigation function in synchronization with the motor and scaler, using the foot control (optional). The user can easily adjust and select between five levels of irrigation depending on clinical requirements by using the Irrigation Adjustment Key.



## Excellent portability and mobility

The light weight, compact and durable carrying case can accommodate VIVAsupport 2, VIVAMATE G5 and Varios 370.



## Significant decrease in set-up time

VIVAsupport 2's design allows for treatment to commence almost as soon as transport case is opened. Only a few simple steps are required to get system ready for treatment.

## Large-capacity bottles for irrigation and suction

Tubes and connections can be easily assembled and disassembled. The dedicated bottles, can be easily maintained, meet the needs of mobile dentistry.





### VIVAsupport 2 Complete Set

MODEL	ORDER CODE
<b>VIVAsupport 2</b>	<b>Y1002802</b>

**Contents :**

- VIVAsupport 2 Control unit • AC adaptor • AC Cord
- VS Irrigation Bottle Set 400 • VS Saliva Bottle Set 400 • Junction Cable • VS Irrigation Tube • VS Saliba Tube • Saliva Tube
- VS Irrigation Pump • Disposable Saliva Ejector (Pack of 10) • Tube Clamp Set (Pack of 6) • VS Saliva Bottle connection Tube
- Saliva Drain Tube • VS Carrying Case • VS Tray

**Specifications**

- Power Supply : AC 100-240 V 50/60 Hz • Battery recharge time : appx. 2 hours.\* • Battery contentions drive time : appx. 2 hour.\*
- Capacity of tank : 350 mL (for irrigation and saliva ejection) • Suction of the pump : 300 mL/min
- Dimensions : W 147 x D 188 x H 98 mm (VIVAsupport 2 Control unit) W 460 x D 265 x H 233 mm (VS Carrying Case)
- Weight : 3.5 kg (VIVAsupport 2 Complete Set)

\*Varies depending on usage situations.



### VIVAMATE G5 + VIVAsupport 2 Long Bottle Set

MODEL	ORDER CODE
<b>VIVAMATEG5+VIVAsupport2 230V</b>	<b>Y1002987</b>

**Contents :**

- VIVAMATE G5 Control unit • VIVAsupport 2 Control unit • Handpiece Stand • Motor (including Motor Cord)
- AC Adaptor x 2 (for VIVAMATE G5 and VIVAsupport 2) • AC Cord x 2 • Foot Control (FC-76M) • Carrying case
- VS Long irrigation / saliva Bottle (1,000 mL) • Junction Cable • VS Irrigation Tube • VS Saliba Tube • Saliva Tube • VS Irrigation Pump
- Disposable Saliva Ejector (Pack of 10) • Tube Clamp Set (Pack of 6) • VS Saliva Bottle connection Tube • Saliva Drain Tube
- VS Carrying Case • VS Tray

**Specifications**

- VIVAMATE G5**  
[Control Unit]
- Power Supply : AC 100-240 V 50/60 Hz • Dimensions : W 72 x D 180 x H 36 mm • Weight : 370 g
  - Battery recharge time : appx. 2 hours.\* • Battery contentions drive time : appx. 1 hour.\*
- [Micromotor]
- Dimensions : ø22 x L 68.6 mm • Weight : 148 g (include Motor cord) • Speed : 3,000-30,000 min<sup>-1</sup>
  - Torque : 3 Ncm (30,000 min<sup>-1</sup> while rotating)
- VIVAsupport 2**
- Power Supply : AC 100-240 V 50/60 Hz • Battery recharge time : appx. 2 hours.\* • Battery contentions drive time : appx. 2 hour.\*
  - Capacity of tank : 1,000 mL (for irrigation and saliva ejection) • Suction of the pump : 300 mL/min
  - Dimensions : W 147 x D 188 x H 98 mm (VIVAsupport 2 Control unit)  
W 460 x D 265 x H 233 mm (VS Carrying Case)
  - Weight : 3.5 kg (VIVAsupport 2 Complete Set)

\*Varies depending on usage situations.